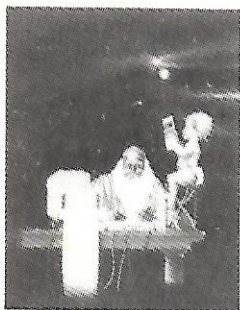


RAINBOW ON TAPE is comprised of ready-to-run programs based on listings published in RAINBOW magazine. The cassette service is not a stand-alone product, but is intended as an adjunct and complement to the magazine. You must refer to RAINBOW for loading and operating instructions.

RAINBOW On Tape
The Falsoft Building
P.O. Box 385
Prospect, KY 40059



The RAINBOW[®] on tape

Your very own Pot O' Gold
under the Rainbow for

JANUARY 1986

January 1986 Rainbow On Tape

Page Side	Name One	CTR-80	CCR-81 and 82
JAN	MENU	11-28	5-16
020	GOPHERIT	31-36	18-22
028	PUZZLER	39-44	23-28
032	MC QUIZ	46-55	29-35
037	SUPRNOVA	57-60	37-39
041	PTRNBLKS	62-67	41-45
042	LOTTOGEN	69-73	47-50
043	CALENDAR	75-78	52-54
043	SKIPRINT	81-82	56-58
044	COUNTDOWN	84-86	59-61
044	REFSHEET	88-92	63-67
045	JOYCOLOR	95-96	68-70
046	INVERTER	98-99	72-73
046	CONVERT	101-103	75-77
055	CHICAGO	106-112	79-85
066	LCLALARM	114-124	87-97
074	*CALCLOCK	126-127	99-100
079	MATHMINR	129-143	102-116
090	ADD SUB5	145-158	118-133
100	SNKCHASE	160-166	134-142
112	COMMHELP	168-171	144-148
124	FIRESTRM	173-179	150-157
130	THE SEED	181-184	159-164
147	SCF EDI	186-195	166-177
150	SMF EDI	196-209	179-197
158	SUL EDI	211-224	199-219
166	SMP EDI	225-230	221-227
173	CALTIME	231-237	230-239
176	SCREEN	239-246	241-255
228	JSTKTEST	248-249	257-259
229	JSTKLINE	251-252	261-263
229	JSTKQUAD	253-255	265-268
229	DIGITIZE	256-261	271-280

*Machine language program

Check the accompanying articles in RAINBOW magazine for instructions on loading and using these programs. (The corresponding page number is noted for your convenience.)

Since RAINBOW ON TAPE programs run the gamut, from 4K to 64K, from Color BASIC to Disk Extended Color BASIC, cassette-based or requiring disk drives, not all programs may work on your own system. Please refer to the corresponding magazine article for system requirements.

Tape counter numbers for the CTR-80, CCR-81 and CCR-82 recorders are noted for your reference. However, counters vary from machine to machine and heavy usage will cause variance on a given cassette due to stretching of the tape. Use our table as an approximate position only. Note: You must cue the tape to the blank spot right before a given program to avoid getting an I/O ERROR.

Special Note: To exit from the MENU, press the up-arrow key. You may have to press it several times until the screen clears. After using any machine language program (including some BASIC programs), turn your computer off and back on or type POKE 113,0:EXEC 40999 to clear it before loading another program.

(While many program listings from THE RAINBOW may be slightly modified and typed in for use on Dragon and MC-10 computers, RAINBOW ON TAPE will not run on these machines.)